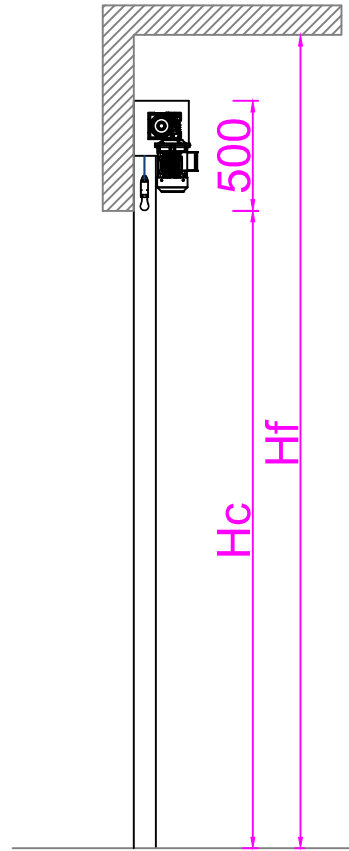
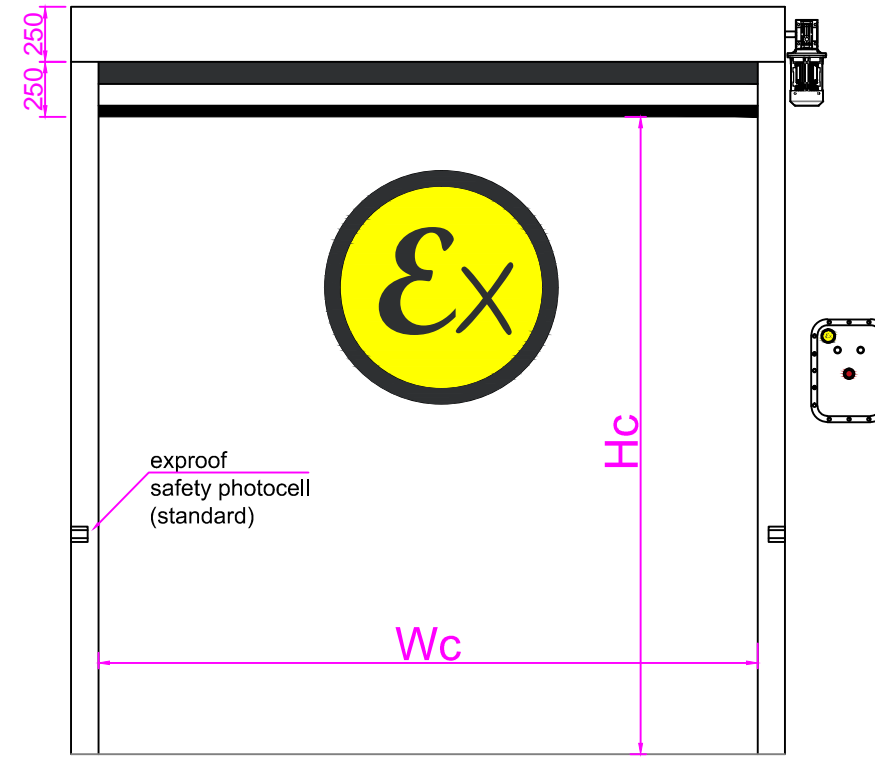


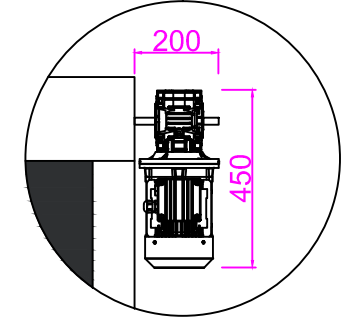
Front View (Closed)



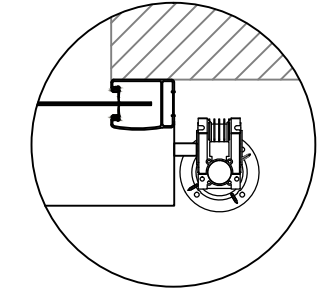
Section View



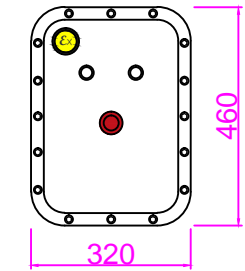
Front View (Opened)



Exproof Motor Detail

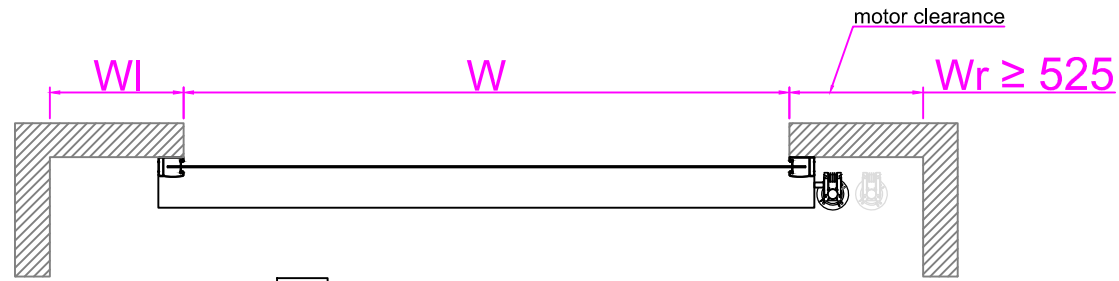


Guiding Detail

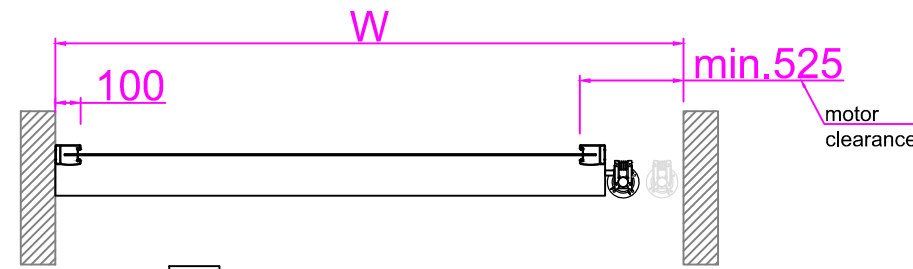


Exproof Control Panel

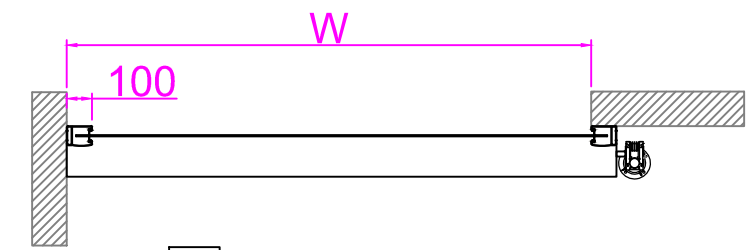
PLEASE SELECT THE PLAN DETAIL TYPES



BOTH SIDES FREE
Clear Width (Wc) = W



WALL ON BOTH SIDES
Clear Width (Wc) = W - 625



ONE SIDE FREE
Clear Width (Wc) = W - 100

Proje Adı / Project Name :			
Ürün Adı / Product Name :		ATEX PVC ROLLING DOOR	
ÖLÇÜLER / DIMENSIONS			
W (mm)		Hc (mm)	
Wl (mm)		Ht (mm)	
Wr (mm)		Hf (mm)	
Wt (mm)			

NOTES:

- * In the selection of aluminium body, guides are produced with a width of 125 mm.
- * Standard safety equipments :exproof safety photocell
- * Button control on the control panel (standard)
- * Inverter control panel (standard)
- * External button is included in the standard package
- * The color of the pvc fabric is BLACK only

Miktar Quantity	Motor Yeri Motor Location		Kontrol ve Güvenlik Control and Safety Options		Voltaj Seviyesi Voltage Spec.	
pcs.	Left	Right	Pull Down Switch	Motion Dedector	Monophase (V)
Metal Aksam Body Structure		Remote	Loop Dedector	Triphase (V)		
		St.Steel (Standard)	Aluminium (Optional)	Tower Photocell	Other	Neutral (Yes/No)